

# PV555MONO

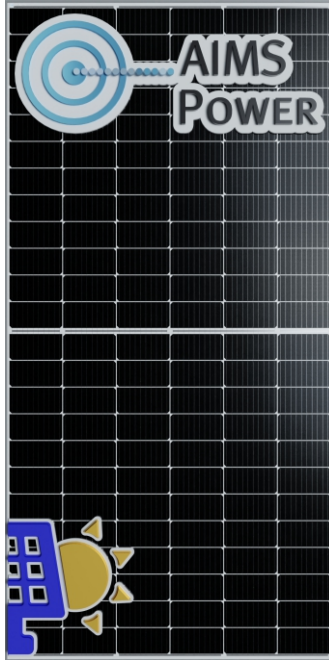


# AIMS POWER™






## PV555MONO

## 555 Watts

## Mono Crystalline Panel



### Key Features

-  PERC mono crystalline modules designed for residential and utility applications, rooftop or ground mountings
-  High power output of more than 555W and module efficiency up to 21.5%
-  Anti-reflective and anti-soiling surface reduces power loss from dirt and dust
-  Outstanding performance in low-light irradiance environments
-  Excellent mechanical load resistance: certified to withstand high wind loads(2400Pa) and snow loads(5400Pa)

### Reliable Quality

#### Raw Material Control

Only the materials certified by TUV officially will be approved.  
Strict material inspection before storehouse acceptance&production.

#### 100% EL Double Test

Front EL test before lamination to find revisable defect.  
Rear EL test before packing to avoid hidden quality threat.

#### Superior Warranty

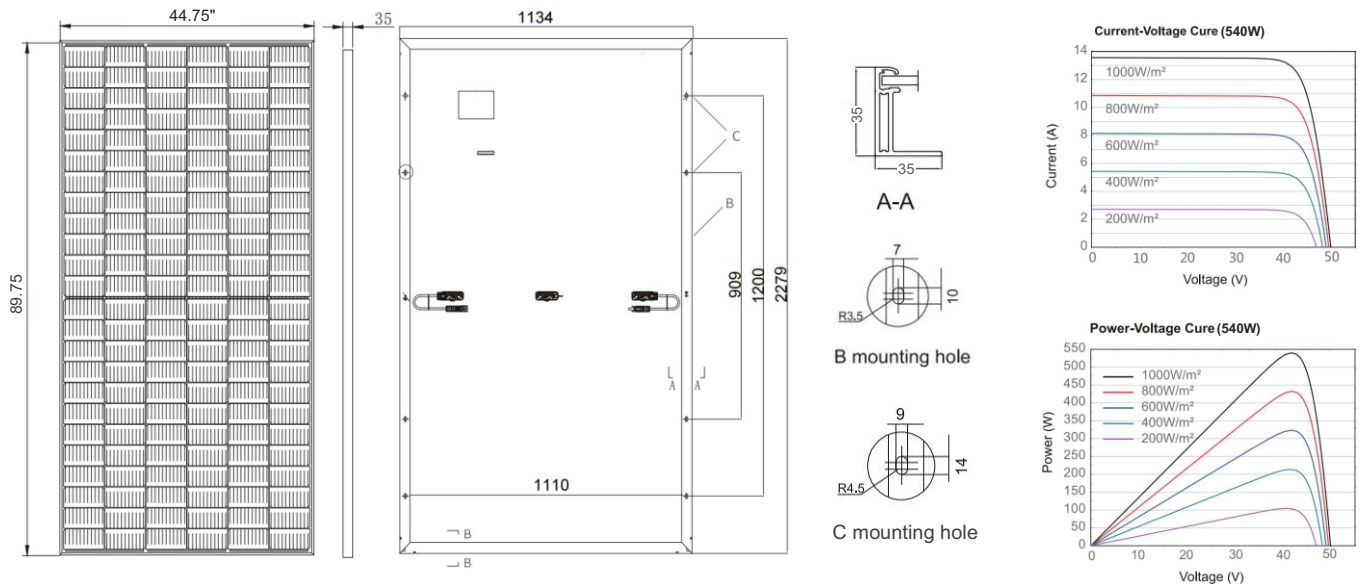
10-year limited product warranty for replacement  
25-year power output warranty for replacement

#### Comprehensive Certification

TUV-SUD  
ETL  
ISO9001/14001



## Drawings&Curves



### Mechanical Characteristics

Cell Type	144 (6x24)	Mono 182×91 mm
Dimension	89.75"×44.75"×1.37"	
Weight	60 lb	
Front Material	Low iron Tempered Glass, 3.2mm	
Cable	4mm <sup>2</sup> , 300mm in length	
Junction Box	IP67; Split Type; 3 diodes	
Connector	MC4 Compatible	

### Temperature Characteristics

NOCT	45±2°C
Temperature coefficient of Pmax	-0.38%/°C
Temperature coefficient of Voc	-0.29%/°C
Temperature coefficient of Isc	0.05%/°C

#### NOCT(Nominal Operating Cell Temperature):

Irradiance 800W/m<sup>2</sup>, Ambient temperature 20,  
AM 1.5)Wind speed 1m/s

### Electrical Characteristics Under STC

Module Type	PV555MONO
Maximum Power-Pmax (Wp)	555
Voltage at Maximum Power-Vmp (V)	42.11
Current at Maximum Power -Imp (A)	13.18
Open Circuit Voltage-Voc (V)	50.02
Short Circuit Current-Isc (A)	14.07
Module Efficiency-η <sub>m</sub> (%)	21.5
Power Tolerance (W)	0/+5
Maximum System Voltage	DC 1500VDC (IEC/UL)
Operating Temperature	-40°C ~ +85°C
Maximum Series Fuse	25A

**STC (Standard Testing Conditions) :** Irradiance 1000/m<sup>2</sup>, Cell temperature 25°C, AM 1.5

### Packing Configuration

Pallet: 31 PCS  
40'HQ: 868PCS

### Tiered Warranty

- ☀️ 10-year product warranty
- ☀️ 10-year warranty for 90% power output
- ☀️ 25-year warranty for 80% power output

