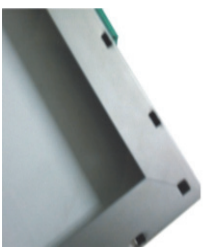




Dimensions: 1909*1134*35mm
Mono Power: 450W

Characteristics

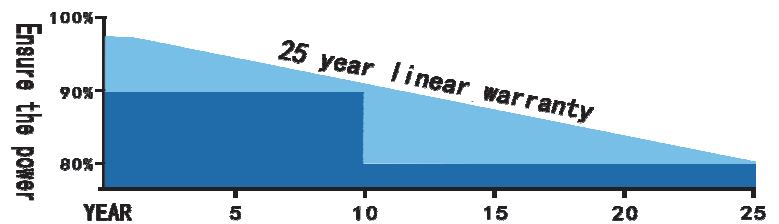
- High efficiency solar cell to keep the modules efficiency reach to 20.79%.
- Positive tolerance to ensure higher output.
- Excellent performance under weak light conditions.
- Modules withstand extremely (temperature, load and impact) TUV certification.
- All modules combination and packing through stepping current to keep effectively reduce mismatch loss.
- 100% EL test to keep higher quality.



Anodized aluminum frame withstand corrosion and damage, Special osculum can reduce destruction by water freeze.

Warranty

- 25 years Linear Product Workmanship Warranty.
- 10 years workmanship warranty.



IP68 junction box long-term weather endurance.

Quality and safety

- ISO9001:2015 certified supplier, we provide world first class solar products for clients.
- TUV,IEC,CEC,CE,CB approved.



Electrical Characteristics

Model No.	SG-450WM
Maximum Power (Pmax)	450W
Max-power Voltage (Vmp)	34.2V
Max-power Current (Imp)	13.16A
Open-circuit Voltage (Voc)	41.72V
Short-circuit Current (Isc)	13.82A
Module Efficiency	20.79%
Operating Temperature	-40°C~+85°C
Maximum System Voltage	1500Vdc
Maximum Series Fuse Rating	20A
Power Tolerance	±3%

*STC condition: 1000 W/m²,1.5AM and 25°C cell temperature.

Temperature Characteristics

NMOT	46°C±2°C
Temperature Co-efficient of Pmax	-0.39%/°C
Temperature Co-efficient of Voc	-0.34%/°C
Temperature Co-efficient of Isc	0.06%/°C

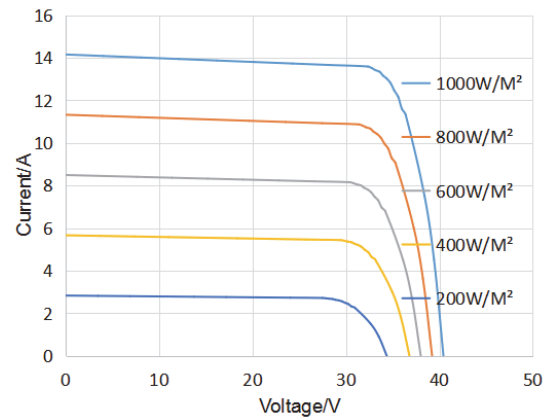
Mechanical Characteristics

Mono Power	450W
Cell Type	Mono 182*91mm
Cell Arrangement	120(6*20)
Dimensions	1909*1134*35mm
Weight	24.5kg
Front Cover	3.2mm tempered glass
Frame Material	Anodized aluminium alloy
Junction Box	IP68 rated
Output Cables	4mm ² ,Length: (+) 300mm/ (-) 300mm

Packing

Packing	40'HC
Pieces/Pallet	30
Pieces/container	720

I-V Curve



Dimensions

